



**Accurate Vascular  
Access. Anywhere.**

# VeinViewer<sup>®</sup>

## FLEX



### ***The portable vein imaging leader.***

- ✓ Most accurate with TrueView™ technology
- ✓ Brightest image, no need to dim the room
- ✓ Optimal green image clarity across all skin tones
- ✓ Harmless LED light, approved for all environments
- ✓ Ergonomic grip for ease of use

### ***VeinViewer is clinically proven to:***

- ✓ Improve first stick success by up to 100%
- ✓ Reduce time to IV access
- ✓ Reduce central lines placed due to difficult venous access by 30%
- ✓ Reduce procedure escalations
- ✓ Increase patient satisfaction by up to 100%

**CHRISTIE** 

# VeinViewer<sup>®</sup>

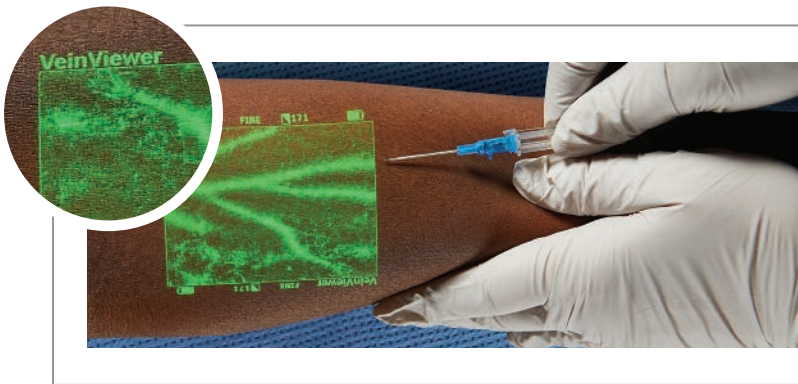
## FLEX

### *Versatility to overcome any challenge.*

VeinViewer<sup>®</sup> Flex operates as a handheld or mounted device, giving clinicians the ability to choose on a situation by situation basis. A built-in suite of imaging modes provides an ideal setting for every patient type giving you an assessment that is fast, efficient and thorough.

### *Any patient. Any environment.*

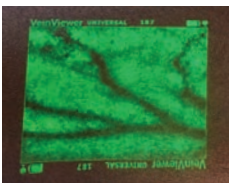
- ✓ Locate veins up to 10mm deep
- ✓ Locate valves and bifurcations
- ✓ Assess refill rate
- ✓ Make the best choice for your patient



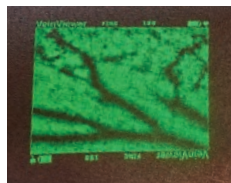
### *TrueView™*

VeinViewer ensures accuracy and ease of use with the markets only in-focus indicator. When the projected image border is clear you can trust the vessel width shown to assist in catheter gauge selection.

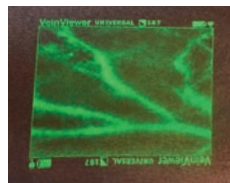
### *See things differently.*



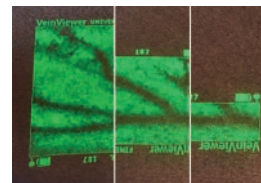
Universal



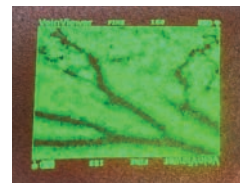
Fine Detail



Inverse



Resize



MaxBright

1-877-SEE-VEIN

Greater First Stick Success - Fewer PICC Lines - Increased Patient Satisfaction

**CHRISTIE**